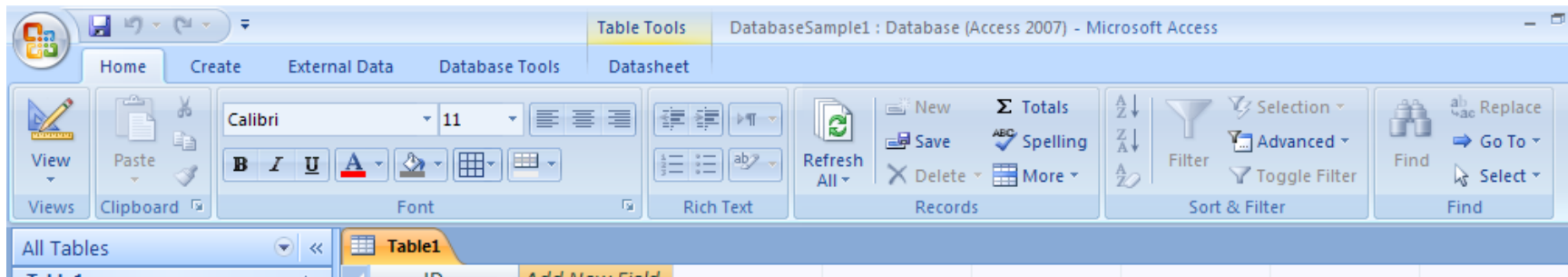




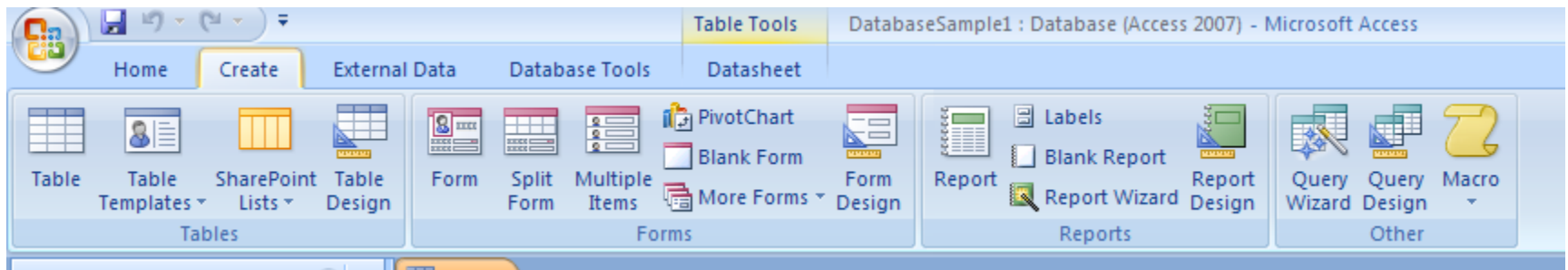
Class Notes:

Access

Home



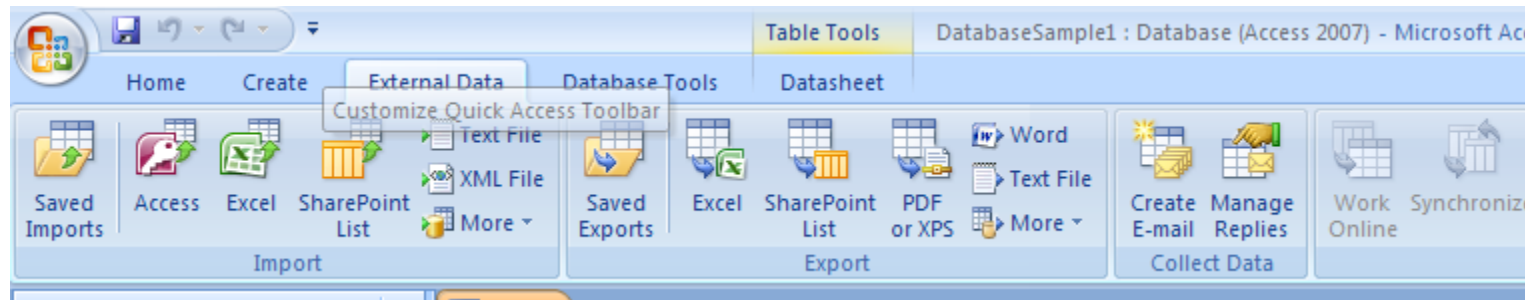
Create



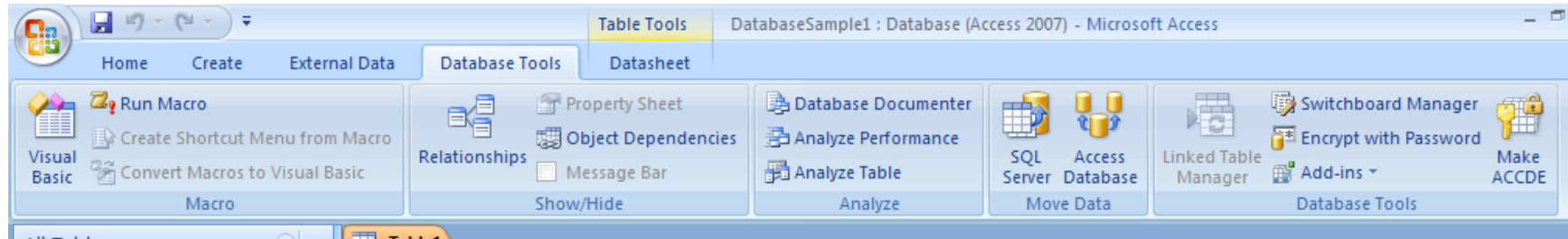


Class Notes:

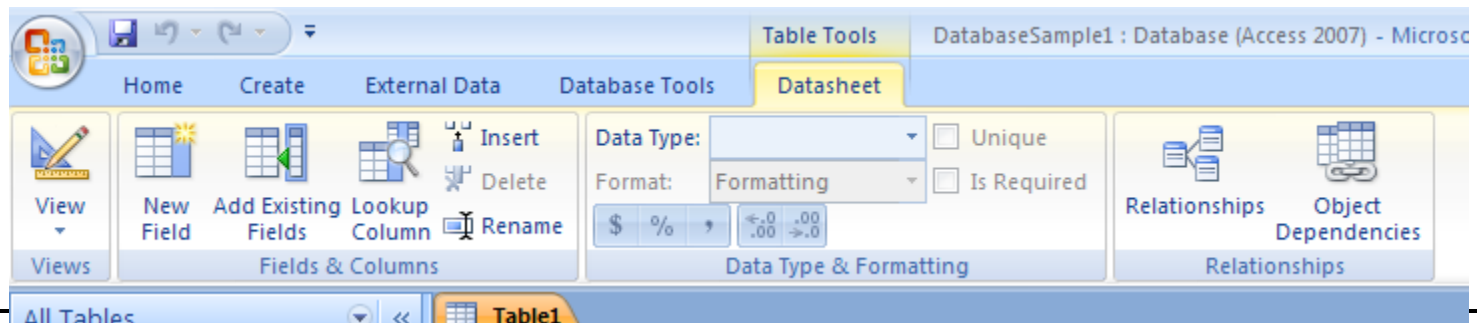
External Data



Database Tools

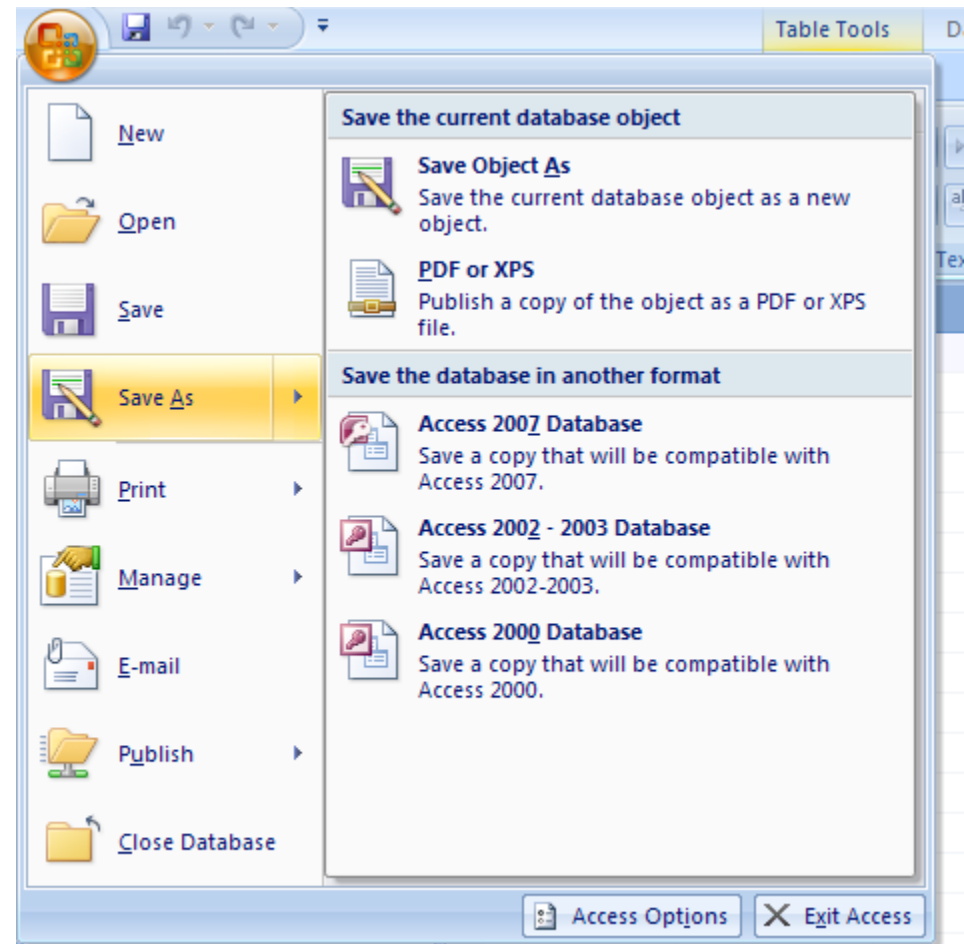
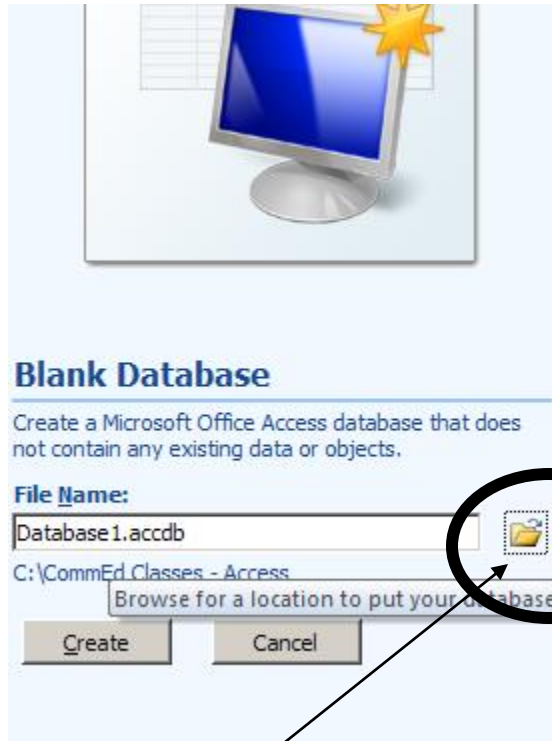


Datasheet



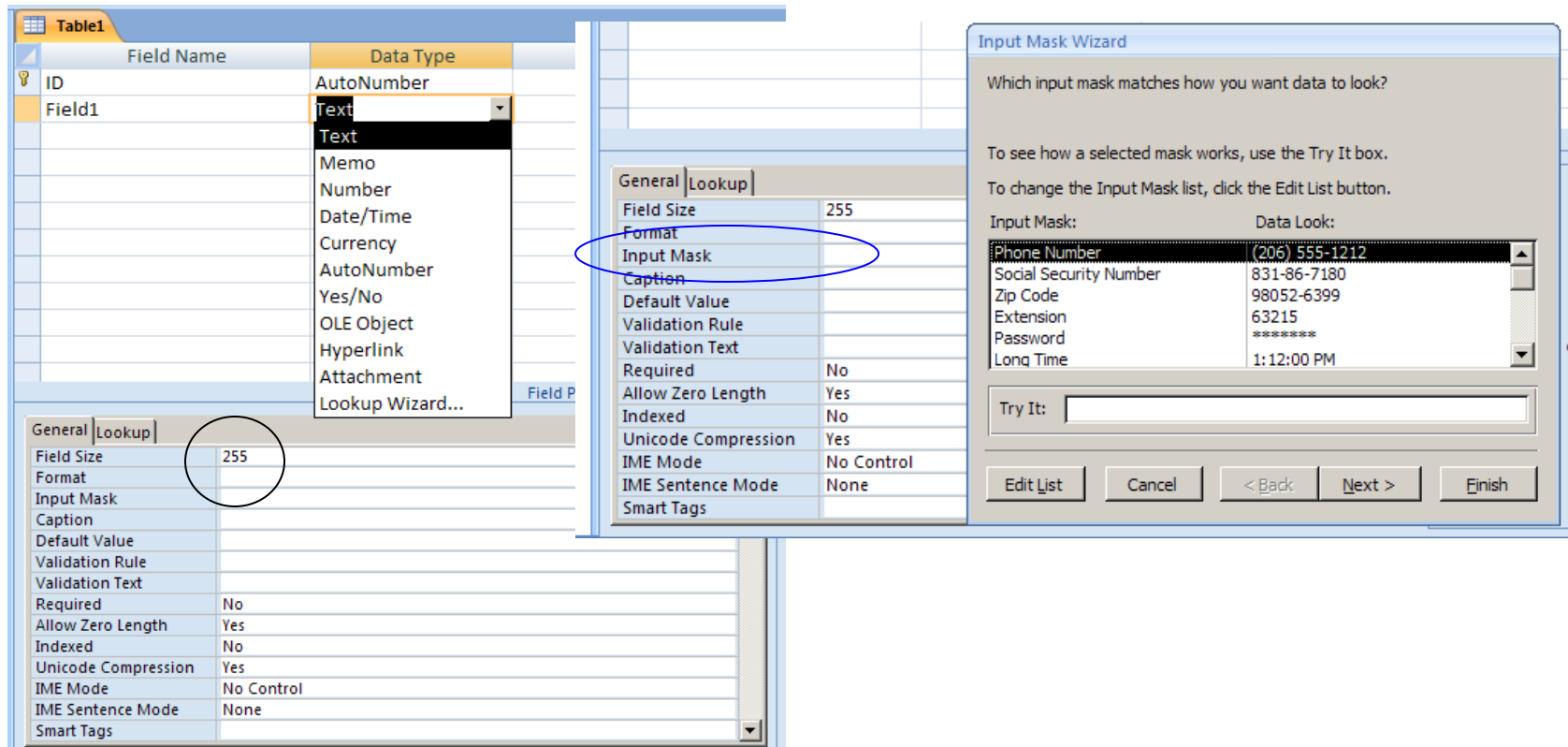


Class Notes:





Class Notes:



The screenshot shows the Microsoft Access interface. On the left, the 'Table1' design view shows a table with two fields: 'ID' (AutoNumber) and 'Field1' (Text). The 'Field Properties' task pane is open for 'Field1', showing the 'General' tab with 'Field Size' set to 255. The 'Input Mask' property is highlighted with a blue circle. The 'Input Mask Wizard' dialog box is open, displaying a list of input masks. The 'Phone Number' mask is selected, showing the example '(206) 555-1212'. The 'Try It:' field is empty. The 'Edit List' button is highlighted with a blue circle.

Field Name	Data Type
ID	AutoNumber
Field1	Text

Property	Value
Field Size	255
Format	
Input Mask	
Caption	
Default Value	
Validation Rule	
Validation Text	
Required	No
Allow Zero Length	Yes
Indexed	No
Unicode Compression	Yes
IME Mode	No Control
IME Sentence Mode	None
Smart Tags	

Input Mask	Data Look
Phone Number	(206) 555-1212
Social Security Number	831-86-7180
Zip Code	98052-6399
Extension	63215
Password	*****
Long Time	1:12:00 PM